

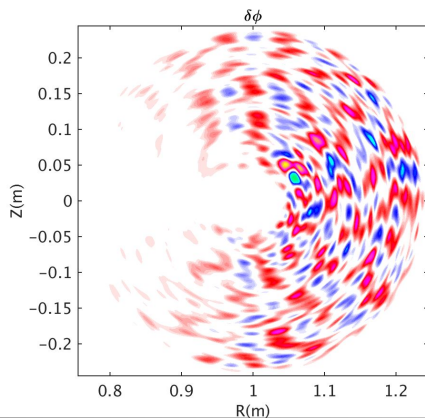
Fielddir: 0

Cyclone Base Case ITG, iload = 2

Fielddir: 1

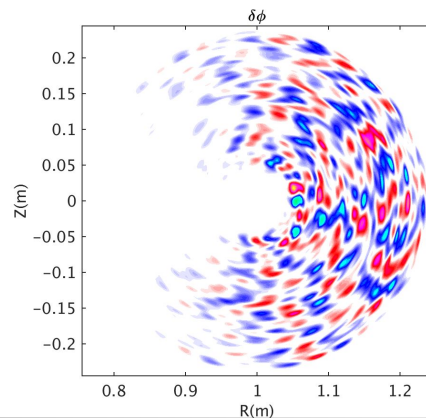
**B: out
I: out**

**$q > 0$
 $g > 0$**



**B: in
I: out**

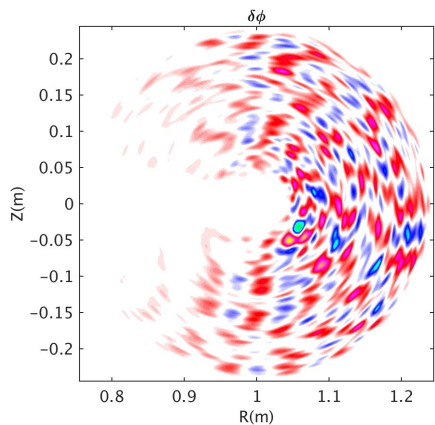
**$q < 0$
 $g < 0$**



Fielddir: 2

**B: in
I: in**

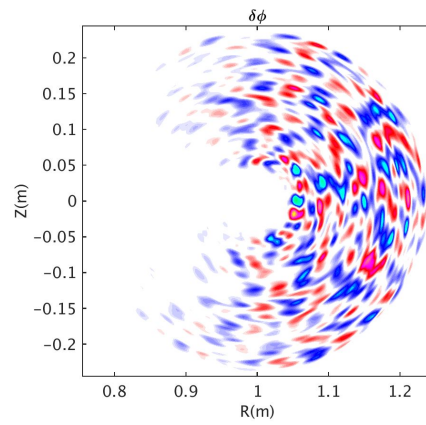
**$q > 0$
 $g > 0$**

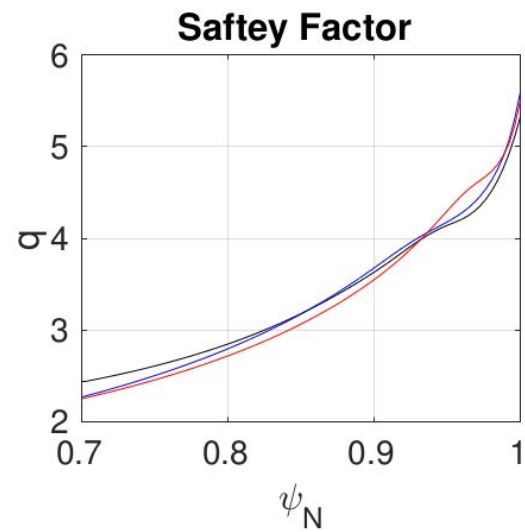
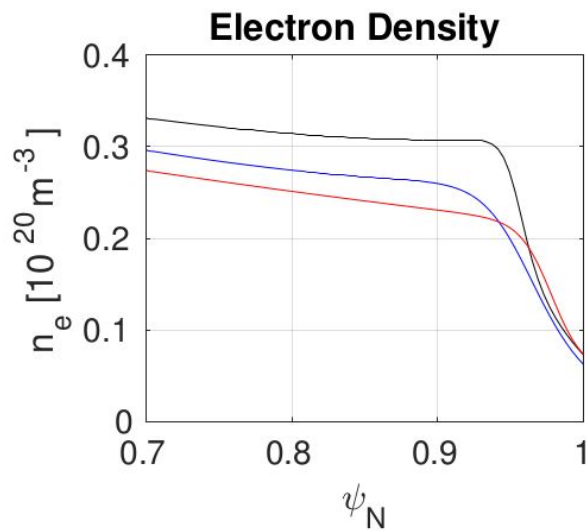
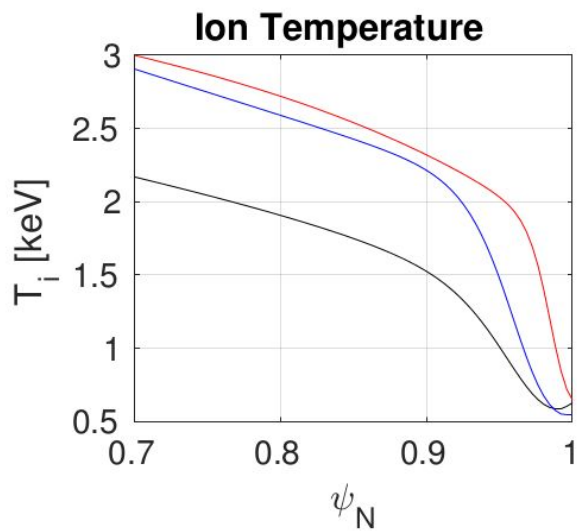
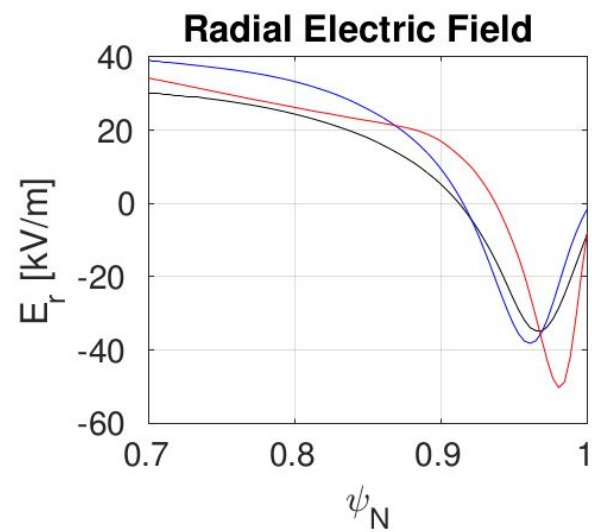
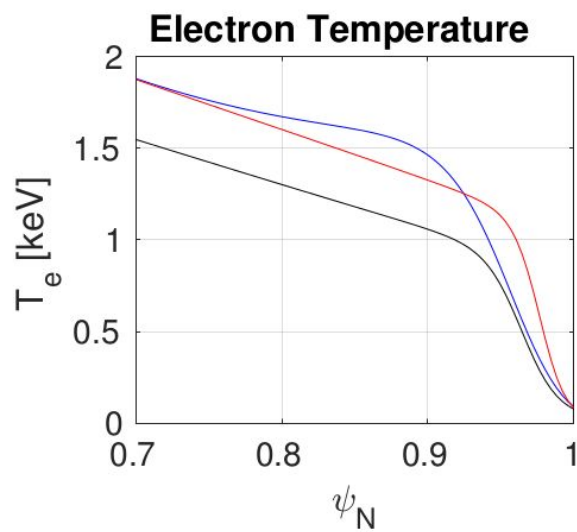
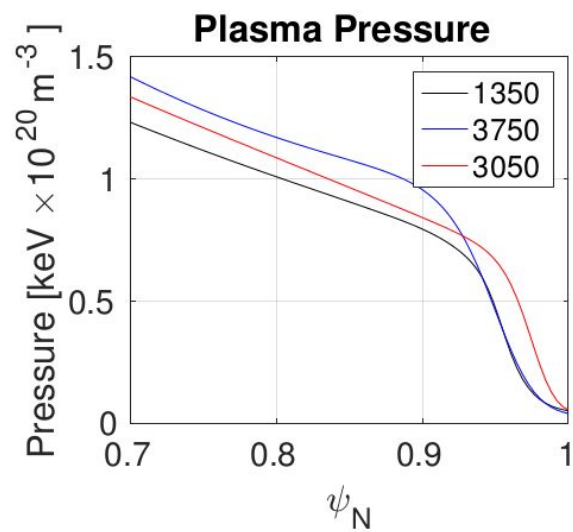


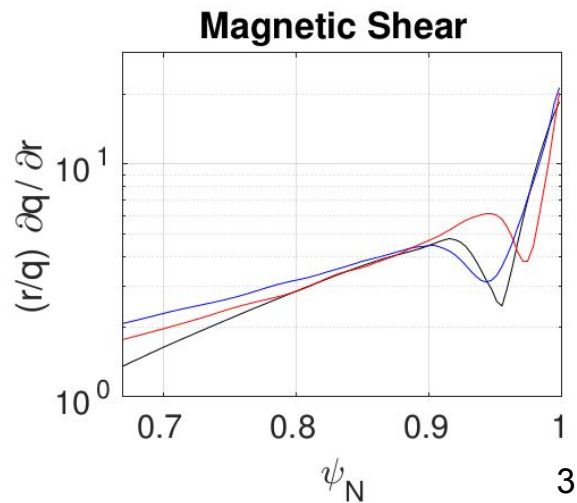
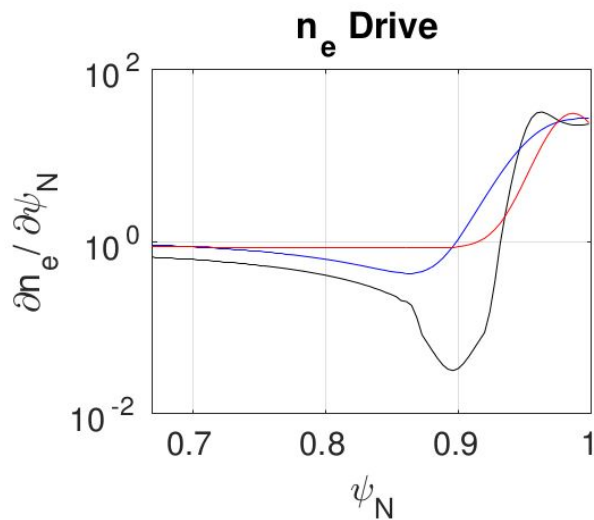
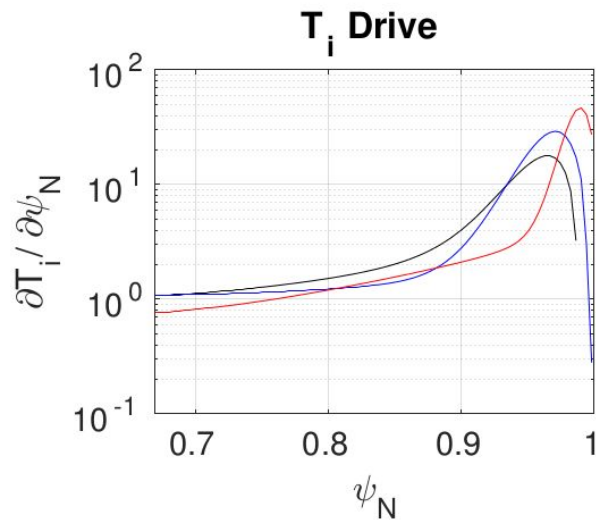
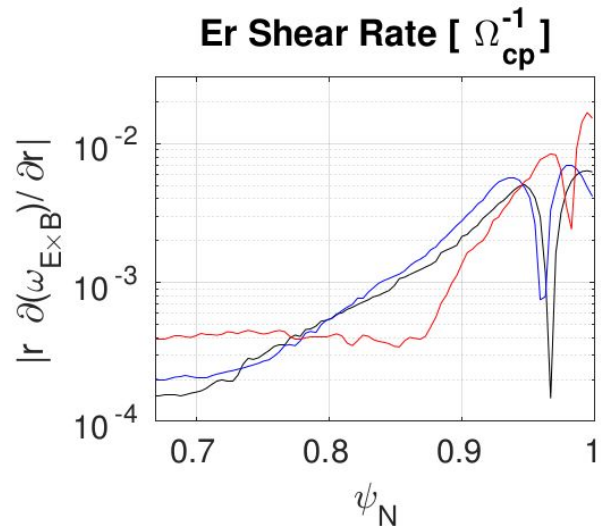
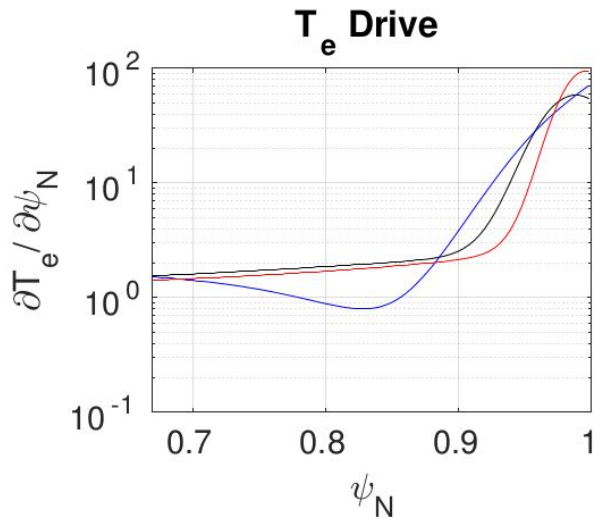
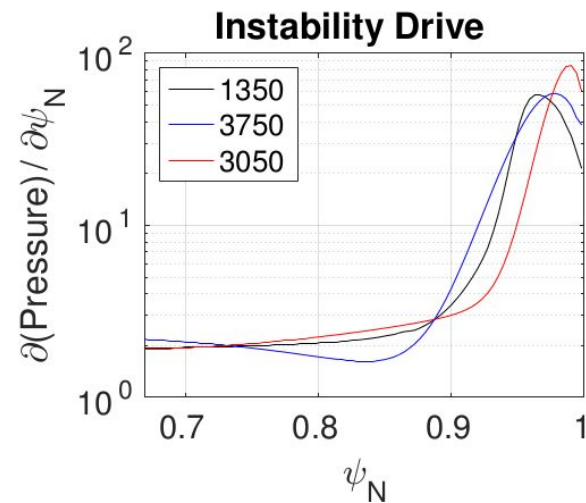
Fielddir: 3

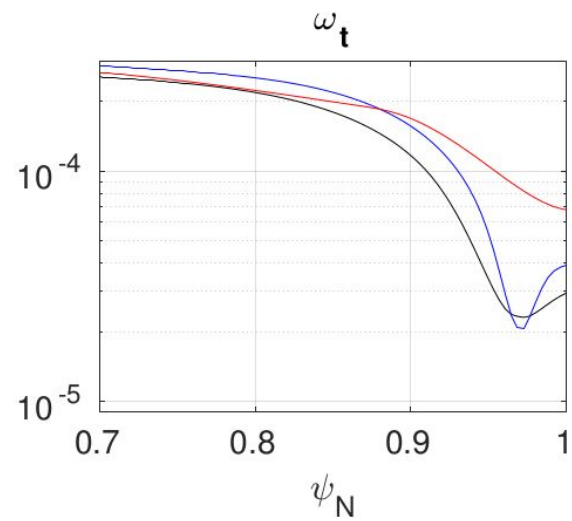
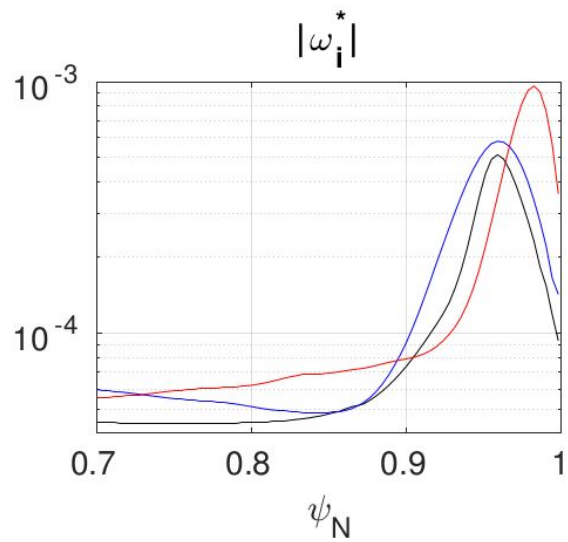
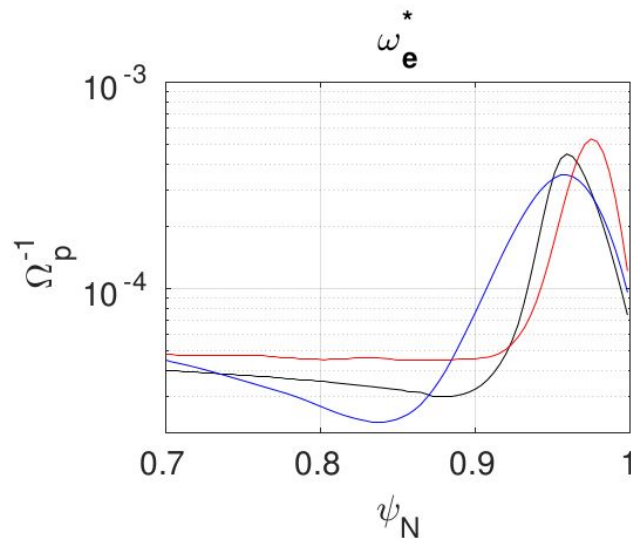
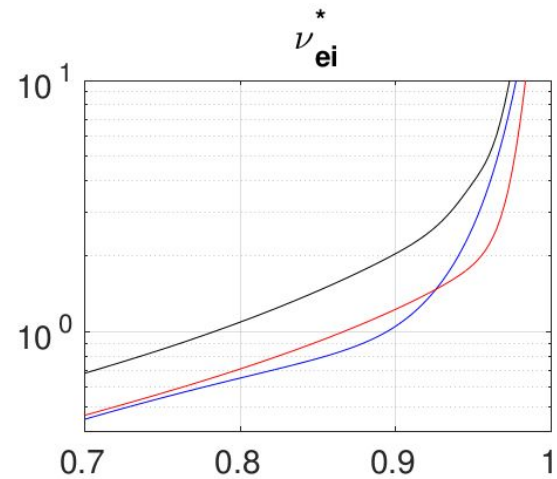
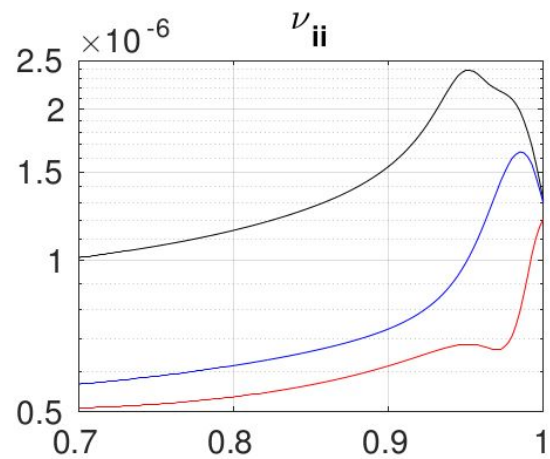
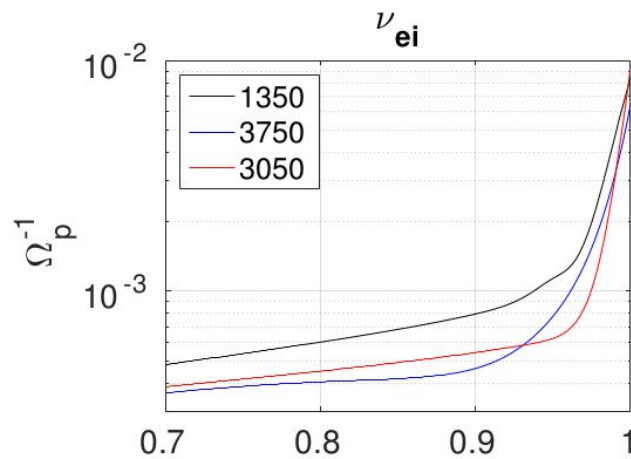
**B: out
I: in**

**$q < 0$
 $g < 0$**

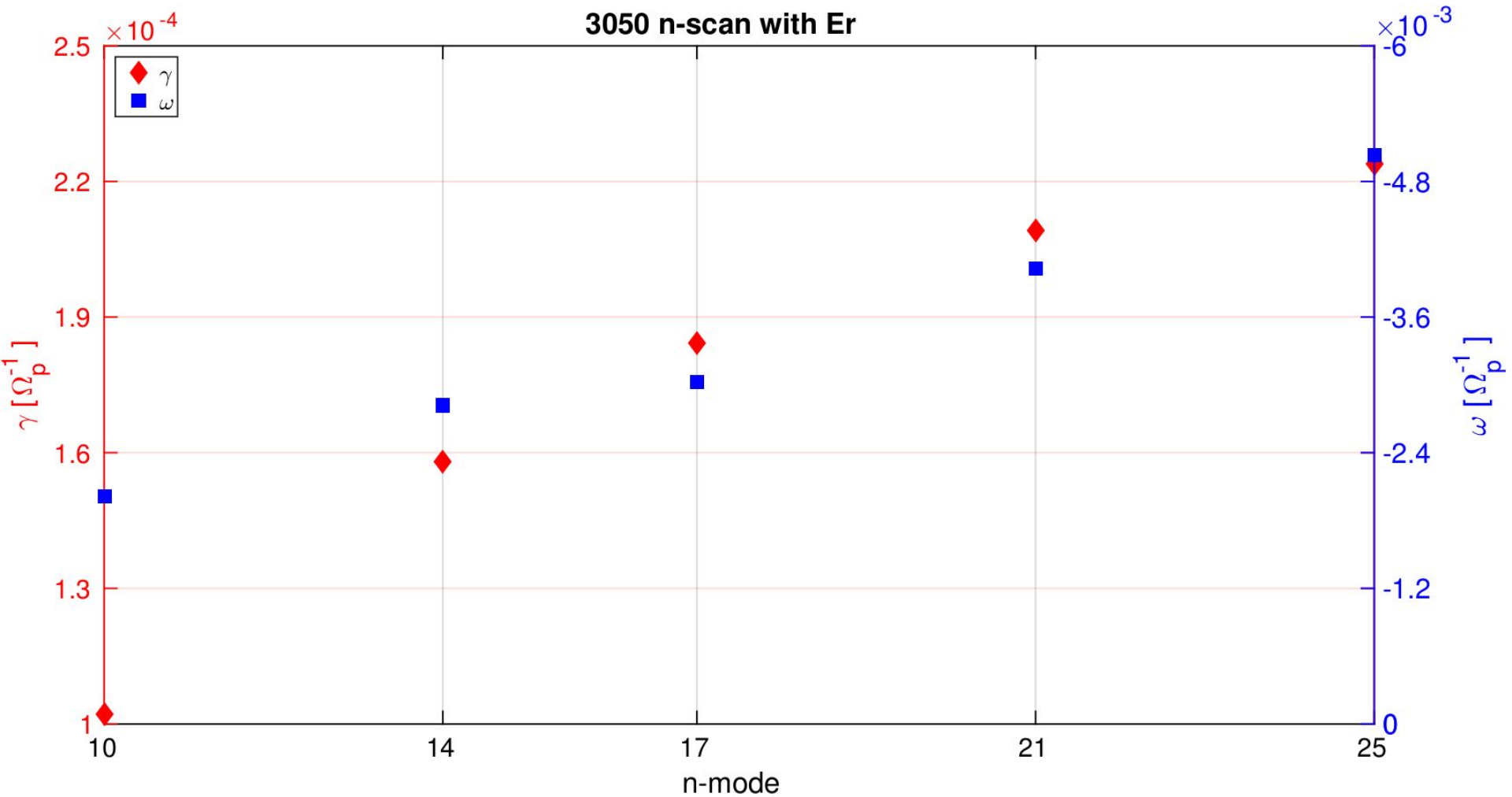








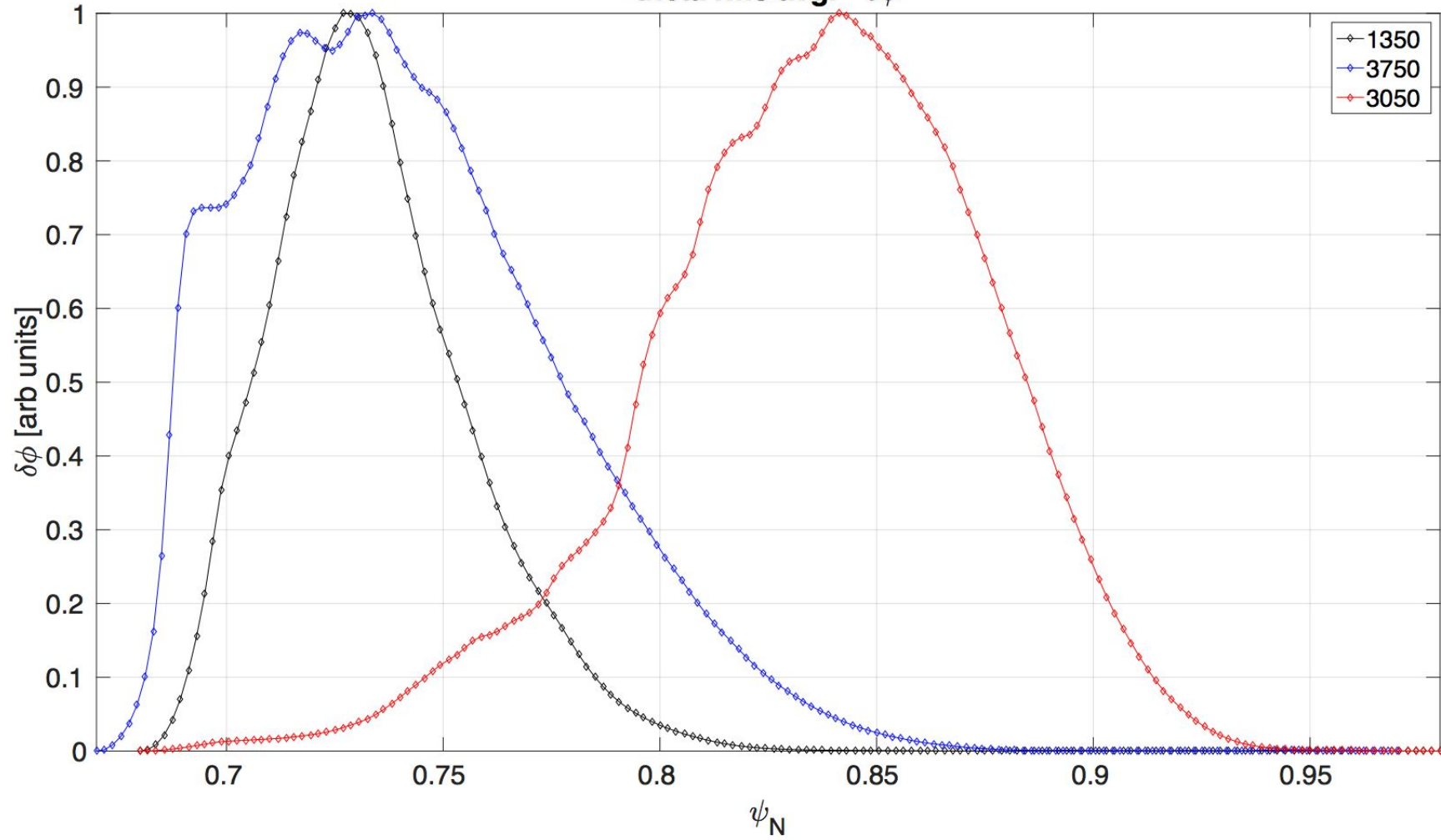
3050 n-scan with Er

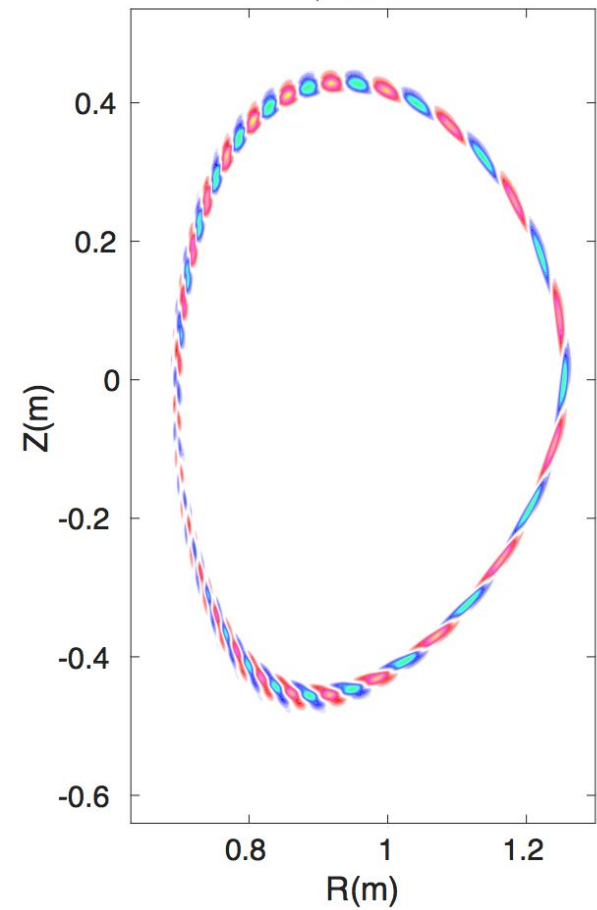
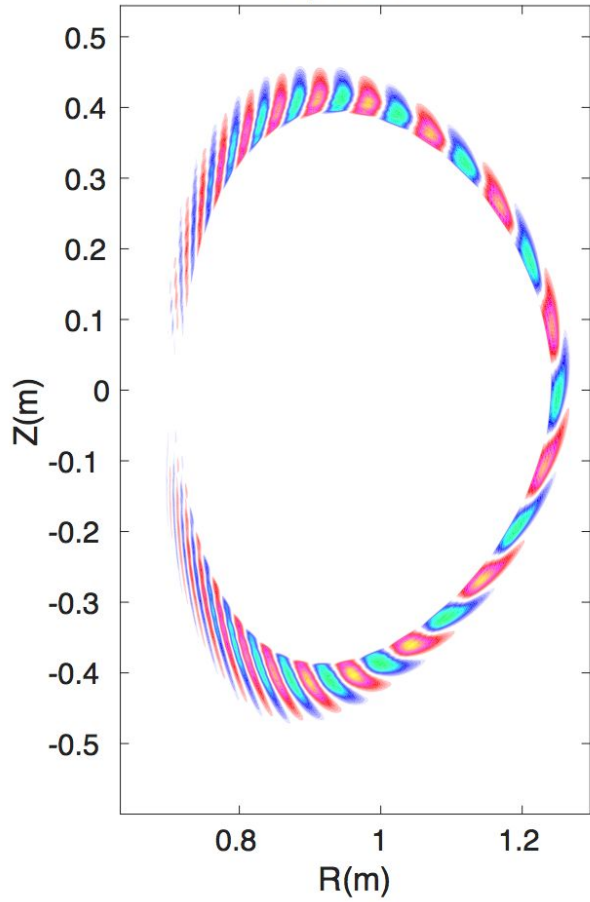
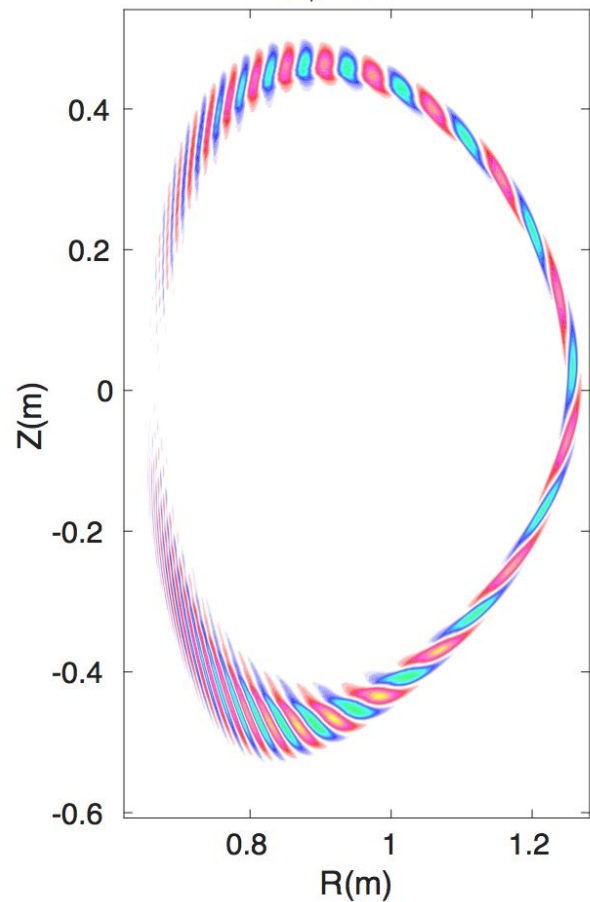


$\psi_N = [0.7 \ 0.99]$
iloop=2

3050: $\gamma [\Omega_p^{-1}]$, $\omega [\Omega_p^{-1}]$, $\psi_{N,mode}$	Adiabatic Electrons	Kinetic Electrons	Kinetic Electrons w/ collisions
No Er nor Rotation	2.63e-5, -1.15e-4, 0.85	2.70e-4, -1.40e-3, 0.968	, , 0.85
Er & Rotation	stable to 9e4 tsteps	1.00e-4, -2.01e-3, 0.85	2.38e-5, +3.23e-4, 0.972

theta rms avg. $\delta\phi$



$\delta\phi$ 1350 $\delta\phi$ 3750 $\delta\phi$ 3050

- Psi ranges are in progress
- ◆ psi_n=[0.68 0.98] for 1350 and 3050
 - ◆ psi_n=[0.67 0.98] for 3750
 - will have to rerun 3050 and 3750 with same psi range, as growth rates are affected by range. Hence, 3750 is shaded dark.

- Actual profiles are used.
- ◆ Full pressure, Er, and rotation profiles are used.

ITG Mode	158104.1350	158103.3750	158103.3050
γ/Ω_p	1.20e-4	1.26e-4	0.92e-4
ω/Ω_p	-2.20e-3	-3.05e-3	-2.01e-3